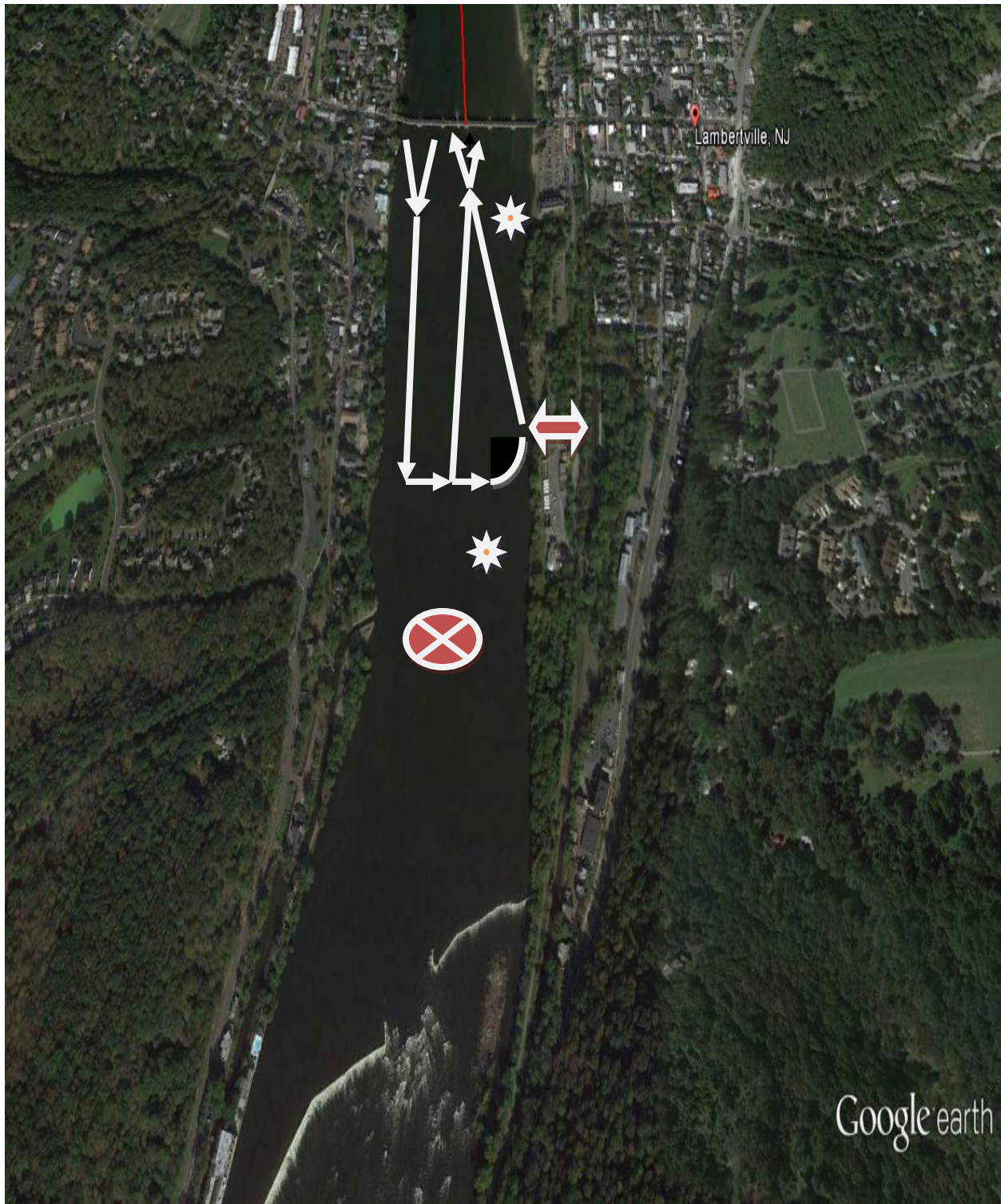


Safe Rowing – South of the Free Bridge



Shoals coming out from Swan Creek



Rocks straight out from Wall south of Waste Treatment Plant

Upriver move towards the middle two arches

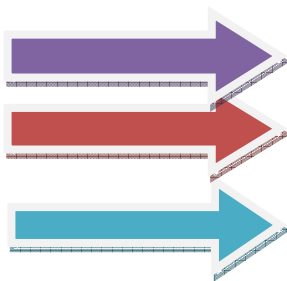
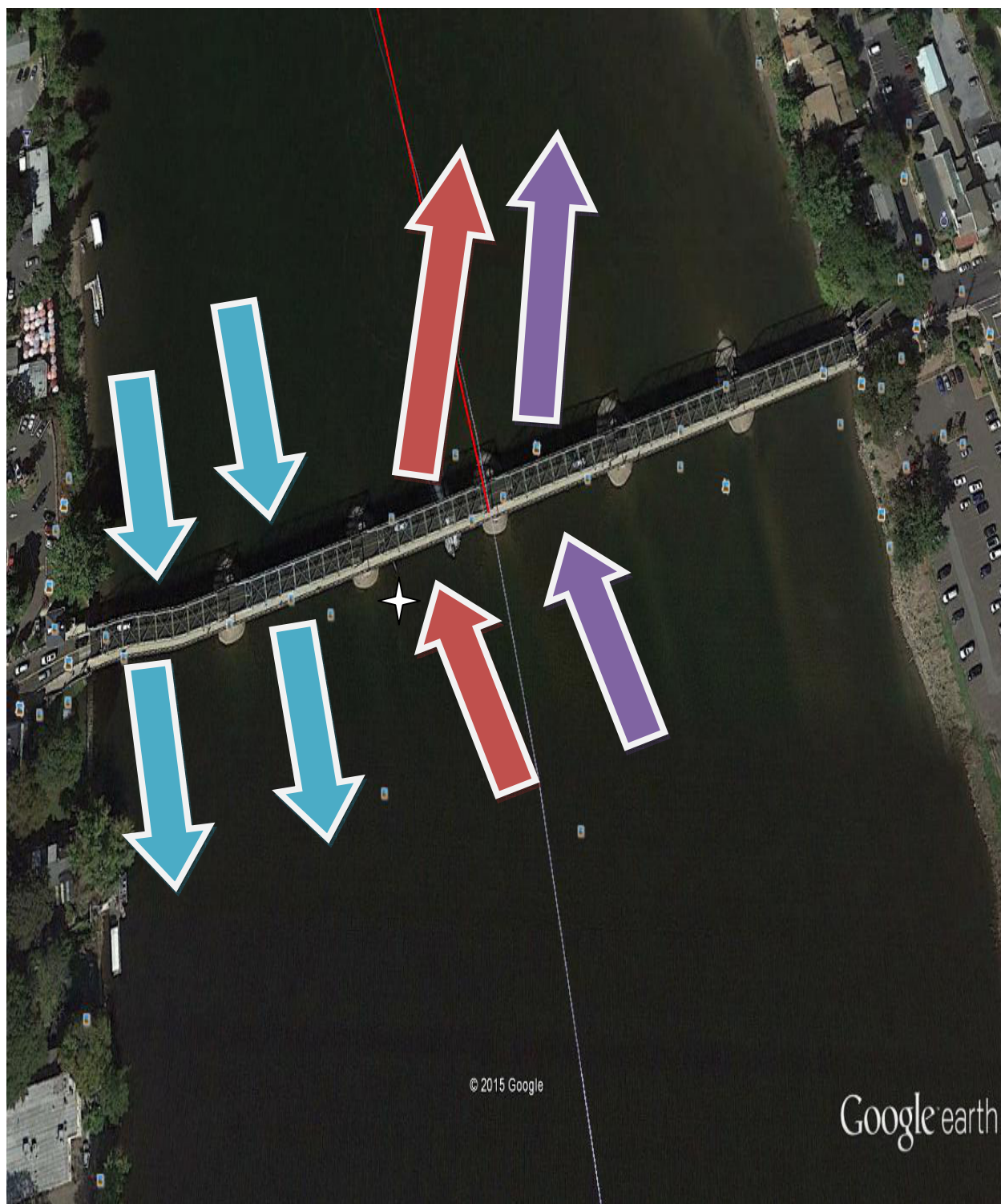
Down river Stay close to PA.



No Rowing beyond Wall and Canal Outlet on PA side.

***Note: Youth and Novice rowers do not row south of boat Launch**

Safe Rowing - Free Bridge Arches



Up River Singles/Doubles

Up River Eights, Fours & Quads-move to right above the bridge.

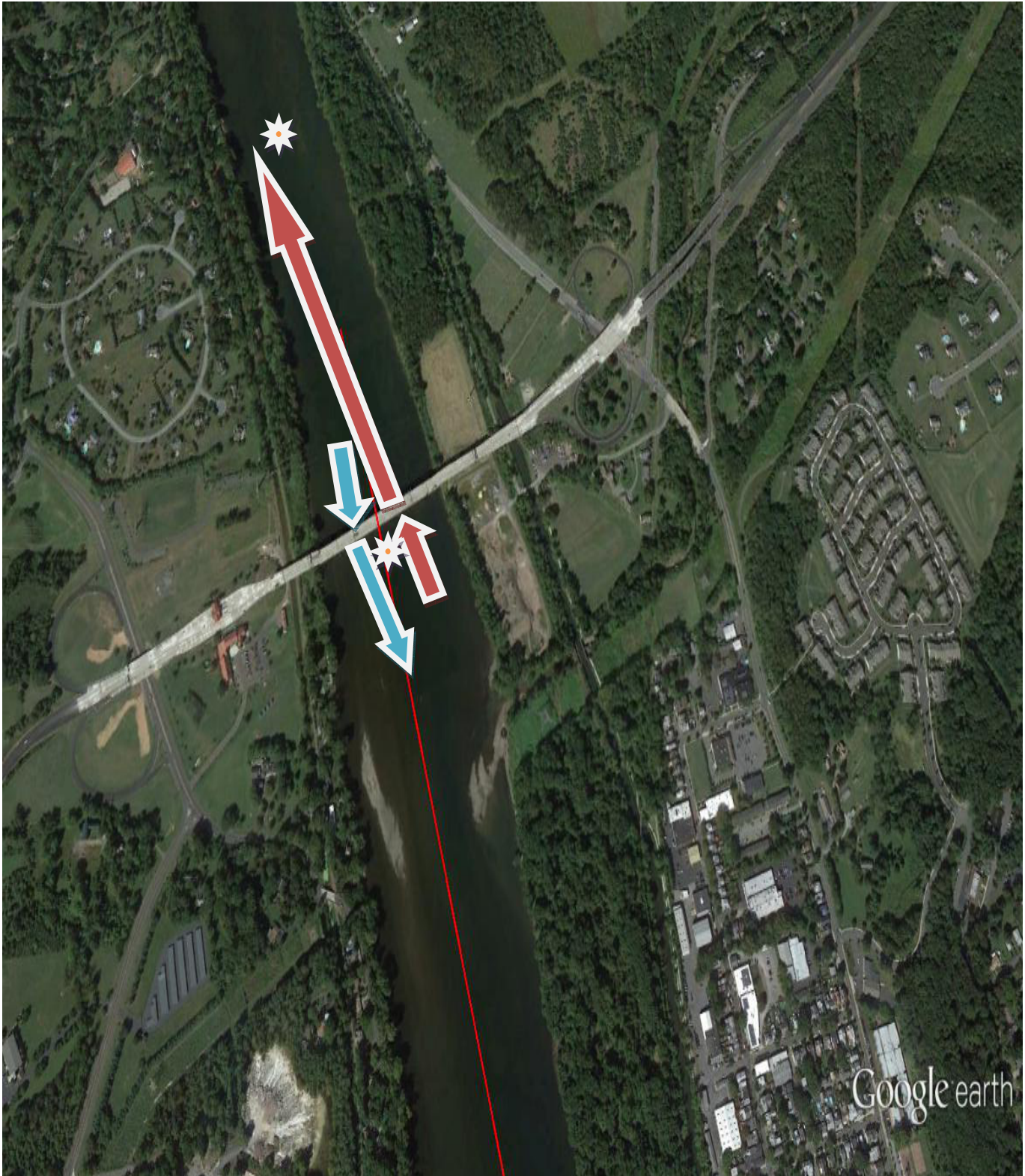
Down River for all boats

Safe Rowing – Between the Bridges



**Stay to the right and towards the middle of the river.
Team boats to take inner lanes.
Singles and doubles use outer lanes.
Go single file through the shoals in low water <8.5 ft**

Safe Rowing – 202 Bridge Arches



Below the Bridge move quickly to the middle of the river between the shoals.

✿ Do not cut too close to the bridge - Refrigerator Rock is just south of the middle piling.

Tight two lane traffic through the shoals. Go to single file when the river < 8.5 ft.

Above the bridge gradually move towards the Pennsylvania side. But do not hug the bank.